

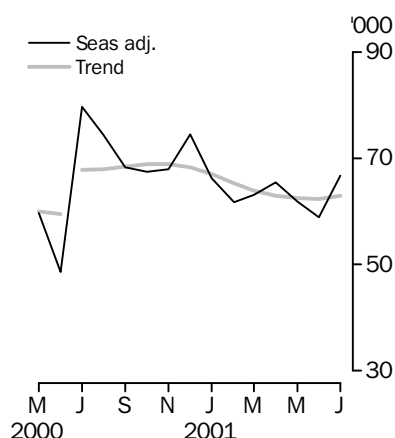
NEW MOTOR VEHICLE REGISTRATIONS

AUSTRALIA
PRELIMINARY

EMBARGO: 11:30AM (CANBERRA TIME) FRI 31 AUG 2001

New vehicle registrations

Total vehicles



JULY KEY FIGURES

TREND ESTIMATES

	Jul 2001	% change Jun 2001 to Jul 2001	% change Jul 2000 to Jul 2001
Total new motor vehicle registrations	62 969	0.9	-7.2
Passenger vehicles	52 924	0.9	-7.9
Other vehicles	10 045	0.8	-2.9

SEASONALLY ADJUSTED

	Jul 2001	% change Jun 2001 to Jul 2001	% change Jul 2000 to Jul 2001
Total new motor vehicle registrations	66 804	13.3	-16.2
Passenger vehicles	55 980	13.6	-20.2
Other vehicles	10 824	12.0	13.4

ORIGINAL ESTIMATES

	Jul 2001	% change Jun 2001 to Jul 2001	% change Jul 2000 to Jul 2001
Total new motor vehicle registrations	68 417	-3.2	-13.4
Passenger vehicles	57 336	-0.5	-17.7
Other vehicles	11 081	-15.0	18.5

JULY KEY POINTS

TREND ESTIMATES

- The trend estimate for total new motor vehicle registrations rose slightly by 0.9% in July 2001 following eight months of decline. Passenger vehicles rose by 0.9% and other vehicles rose by 0.8%.

TAKE CARE!
Trend estimates are revised as new monthly data become available.

SEASONALLY ADJUSTED ESTIMATES

- The seasonally adjusted estimate for total new motor vehicle registrations rose by 13.3% in July 2001 compared with the previous month. This estimate is the highest since December 2000. Rises were recorded in all States and Territories except in Tasmania where a small decline was recorded.

ORIGINAL ESTIMATES

- Total new motor vehicle registrations for July 2001 fell by 3.2% in original terms compared with the previous month. Rises were recorded in Victoria and in Tasmania while falls were recorded in the other States and Territories. Passenger vehicles fell by 0.5% and other vehicles fell by 15.0%.

- For further information about these and related statistics, contact Robin Walden on Brisbane 07 3222 6180, or the National Information and Referral Service on 1300 135 070.

NOTES

FORTHCOMING ISSUES

ISSUE	RELEASE DATE
August 2001	28 September 2001
September 2001	26 October 2001
October 2001	30 November 2001
November 2001	24 December 2001
December 2001	25 January 2002
January 2002	22 February 2002

.....

CHANGES IN THIS ISSUE

There are no changes in this issue.

.....

TREND REVISIONS

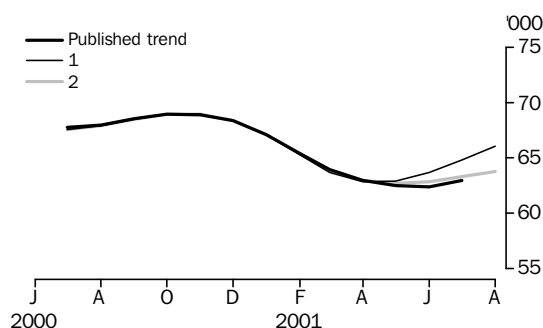
The most recent trend estimates are likely to be revised when new seasonally adjusted estimates become available.

The graph below presents the effect of two possible scenarios on the previous trend estimates:

- 1 The August seasonally adjusted estimate for total vehicle registrations is higher than the July seasonally adjusted estimate by 4.1%.
- 2 The August seasonally adjusted estimate for total vehicle registrations is lower than the July seasonally adjusted estimate by -4.1%.

The percentage change of 4.1% was chosen because the average absolute percentage change, based on the last 11 years, has been 4.1%.

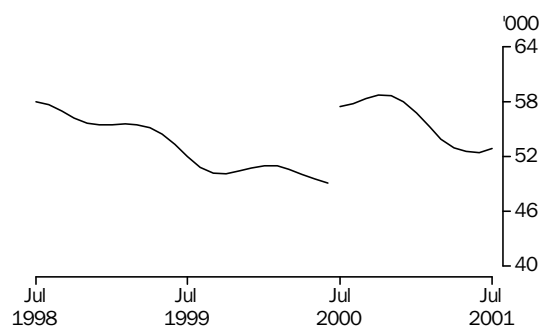
TAKE CARE!
Trend estimates are revised as new monthly data become available.



R.W. Edwards
Acting Australian Statistician

VEHICLE REGISTRATIONS BY TYPE: Trend series (a)

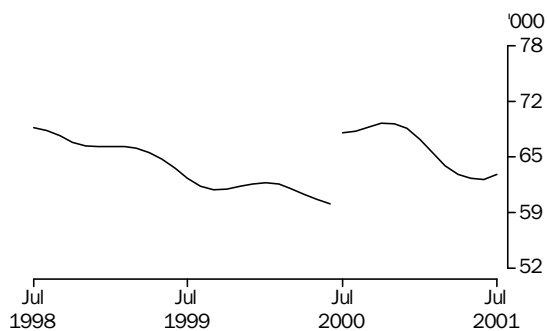
PASSENGER VEHICLES



OTHER VEHICLES



TOTAL VEHICLES (EXCLUDING MOTOR CYCLES)



(a) A break in the trend series occurred between June and July 2000 as a result of changed behaviour arising from the introduction of the New Tax System.

NEW MOTOR VEHICLES, Registrations By Type: All Series

NUMBER.....

CHANGE FROM PREVIOUS MONTH.....

Month	Passenger vehicles no.	Other vehicles no.	Total no.	Passenger vehicles %	Other vehicles %	Total %
ORIGINAL						
2000						
May	51 554	12 585	64 139	23.8	45.3	27.5
June	45 521	15 358	60 879	-11.7	22.0	-5.1
July	69 632	9 354	78 986	53.0	-39.1	29.7
August	65 811	10 557	76 368	-5.5	12.9	-3.3
September	54 759	9 227	63 986	-16.8	-12.6	-16.2
October	56 529	9 734	66 263	3.2	5.5	3.6
November	61 282	10 106	71 388	8.4	3.8	7.7
December	62 717	10 023	72 740	2.3	-0.8	1.9
2001						
January	46 984	8 157	55 141	-25.1	-18.6	-24.2
February	49 281	9 345	58 626	4.9	14.6	6.3
March	56 765	10 863	67 628	15.2	16.2	15.4
April	48 624	8 676	57 300	-14.3	-20.1	-15.3
May	54 562	10 946	65 508	12.2	26.2	14.3
June	57 622	13 032	70 654	5.6	19.1	7.9
July	57 336	11 081	68 417	-0.5	-15.0	-3.2
SEASONALLY ADJUSTED						
2000						
May	48 821	10 873	59 694	-2.5	4.4	-1.3
June	37 610	10 985	48 595	-23.0	1.0	-18.6
July	70 133	9 547	79 680	86.5	-13.1	64.0
August	63 915	10 572	74 487	-8.9	10.7	-6.5
September	58 129	10 171	68 300	-9.1	-3.8	-8.3
October	57 434	10 160	67 594	-1.2	-0.1	-1.0
November	58 145	9 844	67 989	1.2	-3.1	0.6
December	63 825	10 756	74 581	9.8	9.3	9.7
2001						
January	55 634	10 675	66 309	-12.8	-0.8	-11.1
February	51 787	10 039	61 826	-6.9	-6.0	-6.8
March	53 081	10 168	63 249	2.5	1.3	2.3
April	55 426	10 045	65 471	4.4	-1.2	3.5
May	52 421	9 475	61 896	-5.4	-5.7	-5.5
June	49 288	9 668	58 956	-6.0	2.0	-4.7
July	55 980	10 824	66 804	13.6	12.0	13.3
TREND ESTIMATES (a)						
2000						
May	49 572	10 528	60 100	-1.0	-0.8	-0.9
June	49 123	10 449	59 572	-0.9	-0.8	-0.9
July	57 478	10 343	67 821
August	57 760	10 244	68 004	0.5	-1.0	0.3
September	58 349	10 198	68 547	1.0	-0.4	0.8
October	58 735	10 212	68 947	0.7	0.1	0.6
November	58 634	10 289	68 923	-0.2	0.8	0.0
December	57 996	10 358	68 354	-1.1	0.7	-0.8
2001						
January	56 762	10 332	67 094	-2.1	-0.3	-1.8
February	55 227	10 224	65 451	-2.7	-1.0	-2.4
March	53 908	10 097	64 005	-2.4	-1.2	-2.2
April	53 013	9 988	63 001	-1.7	-1.1	-1.6
May	52 611	9 947	62 558	-0.8	-0.4	-0.7
June	52 465	9 962	62 427	-0.3	0.2	-0.2
July	52 924	10 045	62 969	0.9	0.8	0.9

(a) A break in the trend series occurred between June and July 2000 as a result of changed behaviour arising from the introduction of the New Tax System.

NEW MOTOR VEHICLES, Registrations By Type: **Original**

Month	Passenger vehicles	Light commercial vehicles	Rigid trucks	Articulated trucks	Non-freight carrying trucks	Buses	Total (excludes motor cycles)	Motor cycles
2000								
May	51 554	10 625	1 348	196	61	355	64 139	2 770
June	45 521	13 170	1 354	193	113	528	60 879	2 259
July	69 632	7 508	1 047	485	62	252	78 986	2 842
August	65 811	8 689	1 138	331	90	309	76 368	3 125
September	54 759	7 436	1 057	297	148	289	63 986	3 008
October	56 529	7 969	1 164	288	76	237	66 263	3 177
November	61 282	8 234	1 179	299	105	289	71 388	3 423
December	62 717	8 402	1 001	221	124	275	72 740	2 819
2001								
January	46 984	7 018	629	226	55	229	55 141	2 668
February	49 281	7 849	834	264	176	222	58 626	2 563
March	56 765	9 207	1 002	244	160	250	67 628	3 221
April	48 624	7 254	866	219	118	219	57 300	2 655
May	54 562	9 113	1 159	212	175	287	65 508	2 957
June	57 622	11 165	1 095	329	175	268	70 654	2 612
July	57 336	9 249	1 135	321	138	238	68 417	2 526

NEW MOTOR VEHICLES, Registrations By State: All series

Month	New South Wales	Victoria	Queensland	South Australia	Western Australia	Tasmania	Northern Territory	Australian Capital Territory	Australia
ORIGINAL									
2000									
May	22 781	16 487	12 061	3 896	5 843	1 126	760	1 185	64 139
June	21 062	15 074	12 968	3 663	5 097	1 059	897	1 059	60 879
July	27 323	21 037	15 649	4 616	7 360	1 205	555	1 241	78 986
August	27 024	19 878	14 357	4 538	7 086	1 472	701	1 312	76 368
September	20 908	17 197	12 122	4 138	6 386	1 545	590	1 100	63 986
October	22 095	18 629	12 428	4 241	5 978	1 241	601	1 050	66 263
November	24 062	19 859	12 948	4 534	6 610	1 436	614	1 325	71 388
December	23 547	20 942	13 362	4 649	6 407	2 035	601	1 197	72 740
2001									
January	18 657	15 045	10 214	3 436	5 286	1 039	432	1 032	55 141
February	20 007	15 940	11 129	3 637	5 482	996	430	1 005	58 626
March	23 000	17 537	13 479	4 169	6 460	1 195	583	1 205	67 628
April	19 167	15 804	10 913	3 668	5 048	925	726	1 049	57 300
May	22 383	18 363	11 884	4 168	5 705	1 174	696	1 135	65 508
June	22 824	18 797	15 253	4 585	6 213	1 108	714	1 160	70 654
July	22 579	19 570	13 014	4 273	6 013	1 288	546	1 134	68 417
SEASONALLY ADJUSTED									
2000									
May	20 655	15 756	11 294	3 779	5 336	1 108	636	1 130	59 694
June	17 117	12 014	9 882	2 858	4 156	1 068	633	867	48 595
July	26 736	21 604	15 396	4 697	8 218	1 156	631	1 242	79 680
August	27 425	18 682	14 076	4 370	6 760	1 327	684	1 163	74 487
September	22 634	18 105	13 336	4 303	6 741	1 328	675	1 178	68 300
October	22 151	18 870	12 973	4 358	6 225	1 253	634	1 130	67 594
November	22 673	18 548	13 177	4 176	6 217	1 390	595	1 213	67 989
December	25 234	21 186	13 688	4 688	6 423	1 393	742	1 227	74 581
2001									
January	22 114	19 108	11 775	4 333	5 886	1 309	553	1 231	66 309
February	20 996	16 646	11 828	3 784	5 729	1 282	494	1 067	61 826
March	21 401	16 243	12 605	3 936	6 087	1 309	493	1 175	63 249
April	21 246	18 577	12 427	4 158	5 913	1 210	721	1 219	65 471
May	20 938	17 464	11 485	4 061	5 117	1 189	558	1 084	61 896
June	19 449	15 899	11 721	3 831	5 327	1 191	545	993	58 956
July	21 327	19 332	12 663	4 257	6 340	1 184	602	1 099	66 804
TREND ESTIMATES (a)									
2000									
May	21 094	15 643	11 408	3 655	5 399	1 158	623	1 120	60 100
June	20 917	15 493	11 307	3 617	5 314	1 163	636	1 125	59 572
July	22 449	17 906	13 419	4 333	6 740	1 191	649	1 134	67 821
August	22 518	18 105	13 355	4 324	6 654	1 239	659	1 150	68 004
September	22 715	18 520	13 312	4 335	6 544	1 288	664	1 169	68 547
October	22 899	18 910	13 213	4 344	6 416	1 330	654	1 181	68 947
November	22 966	19 106	13 046	4 335	6 292	1 352	636	1 190	68 923
December	22 869	19 026	12 831	4 299	6 175	1 350	611	1 193	68 354
2001									
January	22 542	18 619	12 563	4 220	6 040	1 331	589	1 190	67 094
February	22 018	18 050	12 306	4 123	5 901	1 302	575	1 176	65 451
March	21 455	17 576	12 144	4 051	5 784	1 270	571	1 154	64 005
April	20 988	17 319	12 050	4 012	5 697	1 236	572	1 127	63 001
May	20 683	17 301	12 023	4 007	5 654	1 209	578	1 103	62 558
June	20 474	17 401	12 031	4 017	5 652	1 189	582	1 081	62 427
July	20 507	17 713	12 144	4 064	5 708	1 175	595	1 063	62 969

(a) A break in the trend series occurred between June and July 2000 as a result of changed behaviour arising from the introduction of the New Tax System.

NEW PASSENGER VEHICLES, Top Make/models: **Original**—July 2001

<i>Make/Model</i>	<i>New South Wales</i>	<i>Victoria</i>	<i>Queensland</i>	<i>South Australia</i>	<i>Western Australia</i>	<i>Tasmania</i>	<i>Northern Territory</i>	<i>Australian Capital Territory</i>	Australia
Holden									
Commodore/Calais	2 613	2 226	1 624	662	653	94	28	129	8 029
Astra	987	995	459	258	211	28	10	78	3 026
Barina	294	252	151	95	86	18	1	9	906
Other	433	519	248	88	129	21	5	29	1 472
Total	4 327	3 992	2 482	1 103	1 079	161	44	245	13 433
Toyota									
Camry/Vienta	1 070	734	684	121	206	34	18	33	2 900
Corolla	889	874	366	121	455	66	55	33	2 859
Rav4	313	266	168	38	72	21	11	12	901
Other	1 007	819	625	188	326	36	61	43	3 105
Total	3 279	2 693	1 843	468	1 059	157	145	121	9 765
Ford									
Falcon/Fairmont	1 529	1 948	860	322	313	67	36	57	5 132
Laser	418	524	287	154	77	41	8	20	1 529
Escape	115	108	55	20	21	7		1	327
Other	172	315	134	29	68	12	3	10	743
Total	2 234	2 895	1 336	525	479	127	47	88	7 731
Mitsubishi									
Magna	619	416	335	237	301	46	24	44	2 022
Lancer	407	381	373	102	149	23	7	51	1 493
Pajero	233	153	162	39	49	24	4	18	682
Other	251	312	243	62	43	21	20	16	968
Total	1 510	1 262	1 113	440	542	114	55	129	5 165
Nissan									
Pulsar	599	525	528	85	169	89	5	60	2 060
Patrol	217	132	191	41	104	10	16	8	719
Maxima	58	116	47	11	14	21		2	269
Other	165	165	81	29	40	4	2	8	494
Total	1 039	938	847	166	327	124	23	78	3 542
Mazda									
323	321	253	170	45	65	12	7	21	894
Tribute	236	223	134	34	48	12	1	16	704
121	102	90	100	25	19	4	1	12	353
Other	248	154	81	38	32	9		13	575
Total	907	720	485	142	164	37	9	62	2 526
Hyundai									
Accent	355	336	170	52	249	24	8	15	1 209
Lantra/Elantra	166	158	86	32	104	22	4	5	577
Santa Fe	69	23	45	10	43	4	4	5	203
Other	152	115	80	17	76	11	2	6	459
Total	742	632	381	111	472	61	18	31	2 448

EXPLANATORY NOTES

INTRODUCTION

- 1** This publication presents monthly data for registrations of new motor vehicles.
- 2** The statistics in this publication use the Vehicle Identification Number (VIN), adopted by the State and Territory motor vehicle registration authorities. The information contained in the VIN allows more accurate classification of vehicles. In the case of some States, data processed using the VIN system are not strictly comparable with data processed prior to December 1990.

SCOPE AND COVERAGE

- 3** Motor vehicle registration statistics are obtained from State and Territory motor vehicle registration authorities. The statistics reflect information recorded in registration documents. While the statistics do not depart significantly from actual registrations during the period, a number of registrations processed in a month actually relate to vehicles registered prior to that month.
- 4** New motor vehicle registrations are obtained from New South Wales, Victoria, Queensland and Western Australia registration authorities on a weekly basis. Other registries provide data for each calendar month. The ABS processes the weekly registration data provided for the above-mentioned States and includes data for the relevant month in this publication. Data referring to the next month are withheld and included in the next month's publication. In some months, the ABS processes five weeks of data for the above States, while other months include four weeks of data. In months where five weeks of data are processed and depending on the actual pattern of registration processing, it is possible that there will be a greater number of registrations recorded because the carry forward from the previous month is likely to be greater than the carry over to the next month.
- 5** The scope of the statistics:
 - includes:
 - passenger vehicles
 - light commercial vehicles
 - trucks
 - buses
 - motorcycles (note: not included in totals)
 - vehicles with diplomatic and consular plates
 - State and Commonwealth owned vehicles
 - excludes:
 - vehicles belonging to the defence forces
 - recreation vehicles such as trail bikes and sand dune buggies (in those States where registration is required).

SEASONAL ADJUSTMENT

- 6** Seasonal adjustment is a means of removing the estimated effects of normal seasonal variation from the series so that the effects of other influences can be more clearly recognised.
- 7** Seasonal adjustment does not remove from the series the effect of irregular or non-seasonal influences (e.g. the introduction of new models, processing delays, industrial disputes).

EXPLANATORY NOTES

SEASONAL ADJUSTMENT *continued*

8 Irregular influences that are highly volatile can make it difficult to interpret the series even after adjustment for seasonal variation.

9 Extreme care should be exercised in using the seasonally adjusted series for new motor vehicle registrations in Tasmania, the Northern Territory and the Australian Capital Territory. The small numbers and volatile nature of these data makes reliable estimation of the seasonal pattern very difficult.

10 Seasonally adjusted series are calculated for the 'Passenger vehicles', 'Other vehicles' and 'Total vehicles' series for each State and Territory and are aggregated to obtain the total for Australia.

11 Seasonal adjustment factors are analysed and revised as necessary annually.

TREND ESTIMATES

12 The smoothing of seasonally adjusted series to create trend estimates reduces the impact of the irregular component of the seasonally adjusted series. The trend estimates are derived by applying a 13-term Henderson-weighted moving average to the respective seasonally adjusted series. These trend series are used to analyse the underlying behaviour of the series over time.

13 While this smoothing technique enables trend estimates to be produced for the latest month, it does result in revisions to the trend estimates for the most recent months as data for subsequent months become available. Generally subsequent revisions become smaller and after three months, usually have a negligible impact on the series. Changes in the original data and re-estimation of seasonal factors may also lead to revisions to the trend. For more information, see *A Guide to Interpreting Time Series—Monitoring 'Trends'—an Overview* (Cat. no. 1348.0) or contact the Assistant Director, Time Series Analysis on (02) 6252 6345.

RELATED PUBLICATIONS

14 For a more detailed break-up of the monthly figures presented here, enquiries should be made to the National Information and Referral Service on 1300 135 070 or to Client Services in any ABS office.

Annual data on the latest total vehicle registrations are published in *Motor Vehicle Census, Australia*, 31 October 1999 (Cat. no. 9309.0).

SYMBOLS AND OTHER USAGES

. . . not applicable.

G L O S S A R Y

Articulated trucks	Vehicles constructed primarily for load carrying consisting of a prime mover having no significant load carrying area but with a turn table device which can be linked to a trailer. With or without a trailer the gross combination mass will be 3.5 tonnes or more.
Buses	Vehicles constructed for the carriage of passengers. Included are all passenger vehicles with 10 seats or more, including the driver's seat.
Light commercial vehicles	Describes goods carrying vehicles less than 3.5 tonnes gross vehicle mass. Included are utilities, panel vans, cab-chassis and forward control vehicles (whether four-wheel drive or not).
Motor cycles	Includes 2 and 3 wheeled mopeds, scooters, motor tricycles and motor cycles with side cars.
Non-freight carrying trucks	Includes specialist vehicles such as ambulances, mobile cranes or vehicles fitted with special purpose equipment and having no goods carrying capacity.
Passenger vehicles	Includes cars, station wagons, four-wheel drive passenger vehicles and forward control passenger vehicles with up to nine seats (including the driver).
Registrations	This includes all registrations processed by the motor vehicle registration authorities in the States and Territories during the relevant period.
Rigid trucks	Vehicles constructed primarily for load carrying with a gross vehicle mass of 3.5 tonnes or more.
VIN	The Vehicle Identification Number (VIN) uniquely identifies each vehicle. Embedded in the number are details of make and model together with other relevant information about the vehicle. The VIN is collected by the motor vehicle registration authorities at the time of registration.

FOR MORE INFORMATION...

- INTERNET** www.abs.gov.au the ABS web site is the best place to start for access to summary data from our latest publications, information about the ABS, advice about upcoming releases, our catalogue, and Australia Now—a statistical profile.
- LIBRARY** A range of ABS publications is available from public and tertiary libraries Australia-wide. Contact your nearest library to determine whether it has the ABS statistics you require, or visit our web site for a list of libraries.
- CPI INFOLINE** For current and historical Consumer Price Index data, call 1902 981 074 (call cost 77c per minute).
- DIAL-A-STATISTIC** For the latest figures for National Accounts, Balance of Payments, Labour Force, Average Weekly Earnings, Estimated Resident Population and the Consumer Price Index call 1900 986 400 (call cost 77c per minute).

INFORMATION SERVICE

Data which have been published and can be provided within five minutes are free of charge. Our information consultants can also help you to access the full range of ABS information—ABS user-pays services can be tailored to your needs, time frame and budget. Publications may be purchased. Specialists are on hand to help you with analytical or methodological advice.

- PHONE** **1300 135 070**
- EMAIL** **client.services@abs.gov.au**
- FAX** 1300 135 211
- POST** Client Services, ABS, GPO Box 796, Sydney 1041

WHY NOT SUBSCRIBE?

ABS subscription services provide regular, convenient and prompt deliveries of ABS publications and products as they are released. Email delivery of monthly and quarterly publications is available.

- PHONE** 1300 366 323
- EMAIL** subscriptions@abs.gov.au
- FAX** 03 9615 7848
- POST** Subscription Services, ABS, GPO Box 2796Y, Melbourne 3001



2930100007013
ISSN 1323-4528

RRP \$17.00